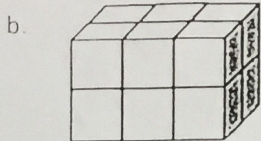
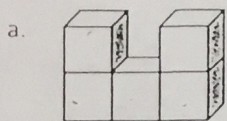


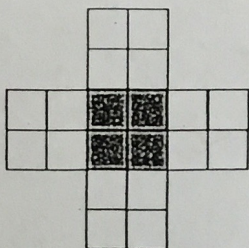
1. What is the volume of the figures pictured below?



Study Guide
Module 5
Topic A and Topic B Quiz

5 cubic units 12 cubic units

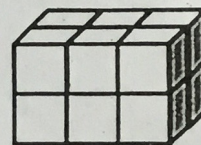
1. If this figure were to be folded into a box, how many cubes would fill it?



Number of cubes: 8

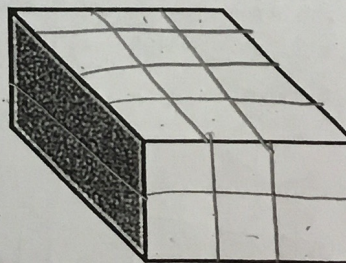
1. Use unit cubes to build the figure to the right, and fill in the missing information.

Number of layers: 2
Number of cubes in each layer: 6
Volume: 12 cubic centimeters

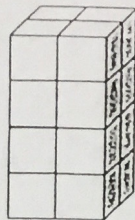


2. This prism measures 3 units by 4 units by 2 units. Draw the layers as indicated.

Number of layers: 4
Number of cubic units in each layer: 6
Volume: 24 cubic centimeters



1. Calculate the volume of prism.



Length: 2 mm

Width: 2 mm

Height: 4 mm

Volume: 16 mm³

Write the multiplication sentence that shows how you calculated the volume. Be sure to include the units.

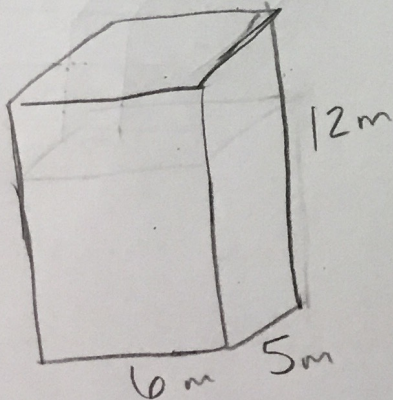
$$2\text{mm} \times 2\text{mm} \times 4\text{mm} = 16\text{mm}^3$$

2. A rectangular prism has a top face with an area of 20ft^2 and a height of 5 ft. What is the volume of this rectangular prism?

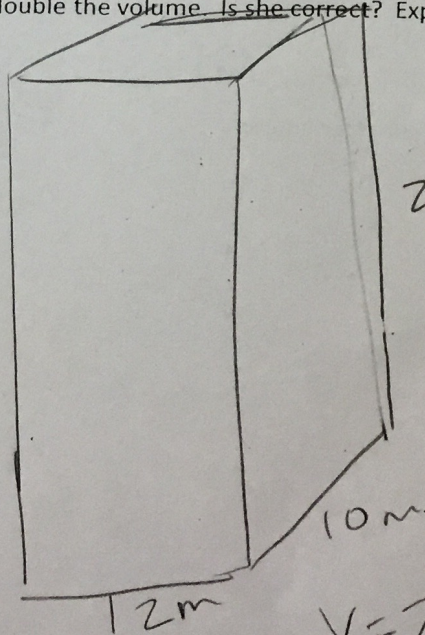
$$\text{Area} = l \times w \quad \text{Volume} = l \times w \times h$$

$$20\text{ft}^2 \times 5\text{ft} = 100\text{ft}^3$$

A storage shed is a rectangular prism and has dimensions of 6 meters by 5 meters by 12 meters. If Jean were to double these dimensions, she believes she would only double the volume. Is she correct? Explain why or why not. Include a drawing in your explanation.



$$V = 360\text{m}^3$$



Double would be 720m^3

$$V = 2880\text{m}^3$$

Ab, she is incorrect b/c the volume is